



Preisliste price list 2022/2023

gültig ab valid from 01.10.2022



aqu S
2700K

| | |
|----------|--|
| 91910-TG | |
| 91910-BB | |
| 91910-PW | |
| 91910-JB | |

386,00 €

aqu M
2700K

| | |
|----------|--|
| 91911-TG | |
| 91911-BB | |
| 91911-PW | |
| 91911-JB | |

448,00 €



lix
2700K

| | |
|----------|--|
| 93930-TG | |
| 93930-BB | |
| 93930-PW | |
| 93930-JB | |
| 93930-RU | |
| 93930-SE | |
| 93930-SU | |

184,00 €

Mindestabnahmemenge: 4 Stück
minimum order quantity: 4 pcs



glim
2700K

| | |
|----------|--|
| 93910-TG | |
| 93910-BB | |
| 93910-PW | |
| 93910-JB | |

98,00 €

Mindestabnahmemenge: 4 Stück
minimum order quantity: 4 pcs



USB-Ladegerät
USB-charger

| | |
|----------|--|
| 55920 | |
| 55920-BL | |

18,00 €



fil S
2700K

| | |
|----------|--|
| 93810-BL | |
|----------|--|

418,00 €

fil M
2700K

| | |
|----------|--|
| 93811-BL | |
|----------|--|

448,00 €

fil S basic* ohne Automatik-Modus
without automatic mode

2700K

| | | |
|------------|---|--|
| 93810-B-BL | % | |
|------------|---|--|

372,00 €

fil M basic* ohne Automatik-Modus
without automatic mode

2700K

| | | |
|------------|---|--|
| 93811-B-BL | % | |
|------------|---|--|

398,00 €



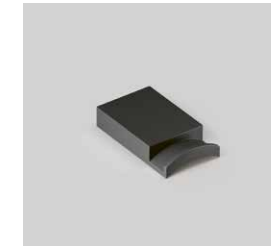
qu
2700K

| | |
|----------|--|
| 93950-BB | |
| 93950-JB | |

206,00 €

Mindestabnahmemenge: 2 Stück
minimum order quantity: 2 pcs

Zubehör qu
accessory qu



qu hook

| | |
|----------|--|
| 93952-BB | |
| 93952-JB | |

26,00 €



qu pin

| | |
|-------|--|
| 93953 | |
|-------|--|

74,00 €



qu rope

| | |
|-------|--|
| 93951 | |
|-------|--|

26,00 €



como

| 2700K | |
|-------------|--|
| 92180-27-AN | |
| 92180-27-CB | |
| 92180-27-SG | |
| 92180-27-WH | |
| 92180-27-BL | |

334,00 €

| 3000K* | |
|----------|--|
| 92180-CB | |

302,00 €



como one

| 2700K | |
|-------------|--|
| 92181-27-AN | |
| 92181-27-CB | |
| 92181-27-SG | |
| 92181-27-WH | |
| 92181-27-BL | |

282,00 €

| 3000K* | |
|------------|--|
| 92180-D-AN | |
| 92180-D-SG | |
| 92180-D-WH | |

254,00 €



cut

| 2700K | |
|-------------|--|
| 91191-27-AN | |
| 91191-27-CB | |
| 91191-27-SG | |
| 91191-27-WH | |
| 91191-27-BL | |

372,00 €

| 3000K* | |
|----------|--|
| 91191-CB | |
| 91191-WH | |

328,00 €



gap Q

| 2700K | |
|---------------|--|
| 91100-27-Q-AN | |
| 91100-27-Q-CB | |
| 91100-27-Q-SG | |
| 91100-27-Q-WH | |
| 91100-27-Q-BL | |

302,00 €

| 3000K* | |
|------------|--|
| 91100-Q-CB | |
| 91100-Q-SG | |
| 91100-Q-WH | |

272,00 €



gap X

| 2700K | |
|---------------|--|
| 91100-27-X-AN | |
| 91100-27-X-CB | |
| 91100-27-X-SG | |
| 91100-27-X-WH | |
| 91100-27-X-BL | |

294,00 €

| 3000K* | |
|------------|--|
| 91100-X-AN | |
| 91100-X-SG | |
| 91100-X-WH | |

264,00 €



gap Y

| 2700K | |
|---------------|--|
| 91100-27-Y-AN | |
| 91100-27-Y-CB | |
| 91100-27-Y-SG | |
| 91100-27-Y-WH | |
| 91100-27-Y-BL | |

328,00 €

| 3000K* | |
|------------|--|
| 91100-Y-CB | |
| 91100-Y-SG | |

298,00 €



cut control

| 2700K | |
|-------------|--|
| 91190-27-AN | |
| 91190-27-CB | |
| 91190-27-SG | |
| 91190-27-WH | |
| 91190-27-BL | |

408,00 €

| 3000K* | |
|----------|--|
| 91190-AN | |
| 91190-CB | |
| 91190-SG | |
| 91190-WH | |
| 91190-BL | |

364,00 €



cut one

| 2700K | |
|----------|--|
| 91192-AN | |
| 91192-CB | |
| 91192-SG | |
| 91192-WH | |
| 91192-BL | |

194,00 €



dia

| 2700K | |
|----------|--|
| 91250-AN | |
| 91250-BL | |

418,00 €



intro

| 2700K | |
|-------------|--|
| 92491-27-AN | |
| 92491-27-CB | |
| 92491-27-SG | |
| 92491-27-WH | |
| 92491-27-BL | |

264,00 €

| 3000K* | |
|----------|--|
| 92491-AN | |
| 92491-CB | |
| 92491-BL | |

238,00 €



lisc

| 2700K | |
|----------|--|
| 91210-AN | |
| 91210-WH | |

382,00 €



lisc number

| 2700K | |
|-------------|--|
| 91210-NO-AN | |
| 91210-NO-WH | |

486,00 €



pip
2700K

| | |
|-------------|--|
| 91120-27-AN | |
| 91120-27-CB | |
| 91120-27-SG | |
| 91120-27-WH | |
| 91120-27-BL | |

358,00 €

3000K*

| | |
|----------|---|
| 91120-AN | % |
| 91120-CB | % |
| 91120-SG | % |
| 91120-WH | % |
| 91120-BL | % |

328,00 €



scap
2700K

| | |
|----------|--|
| 92271-AN | |
| 92271-CB | |
| 92271-SG | |
| 92271-WH | |
| 92271-BL | |

276,00 €



scap one
2700K

| | |
|----------|--|
| 92272-AN | |
| 92272-CB | |
| 92272-SG | |
| 92272-WH | |
| 92272-BL | |

178,00 €



stic
2700K

| | |
|----------|--|
| 91760-AN | |
| 91760-CB | |
| 91760-WH | |
| 91760-BL | |

266,00 €



stic control
2700K

| | |
|----------|--|
| 91761-AN | |
| 91761-CB | |
| 91761-WH | |
| 91761-BL | |

288,00 €



slat
2700K

| | |
|-------------|--|
| 91130-27-AN | |
| 91130-27-CB | |
| 91130-27-SG | |
| 91130-27-WH | |
| 91130-27-BL | |

412,00 €

3000K*

| | |
|----------|---|
| 91130-AN | % |
| 91130-CB | % |
| 91130-SG | % |
| 91130-WH | % |
| 91130-BL | % |

372,00 €



slat one
2700K

| | |
|-------------|--|
| 91131-27-AN | |
| 91131-27-CB | |
| 91131-27-SG | |
| 91131-27-WH | |
| 91131-27-BL | |

292,00 €

3000K*

| | |
|----------|---|
| 91131-AN | % |
| 91131-CB | % |
| 91131-SG | % |
| 91131-WH | % |
| 91131-BL | % |

262,00 €



lisc
2700K

| | |
|----------|--|
| 91210-AN | |
| 91210-WH | |

382,00 €



pro R
2700K

| | |
|---------------|--|
| 91810-27-R-AN | |
| 91810-27-R-SG | |
| 91810-27-R-WH | |
| 91810-27-R-BL | |

282,00 €

3000K*

| | |
|------------|---|
| 91810-R-AN | % |
| 91810-R-CB | % |
| 91810-R-SG | % |
| 91810-R-WH | % |

248,00 €



pro S
2700K

| | |
|---------------|--|
| 91810-27-S-AN | |
| 91810-27-S-SG | |
| 91810-27-S-WH | |
| 91810-27-S-BL | |

282,00 €

3000K*

| | |
|------------|---|
| 91810-S-AN | % |
| 91810-S-SG | % |
| 91810-S-WH | % |
| 91810-S-BL | % |

248,00 €



slat one
2700K

| | |
|-------------|--|
| 91131-27-AN | |
| 91131-27-CB | |
| 91131-27-SG | |
| 91131-27-WH | |
| 91131-27-BL | |

292,00 €

3000K*

| | |
|----------|---|
| 91131-AN | % |
| 91131-CB | % |
| 91131-SG | % |
| 91131-WH | % |
| 91131-BL | % |

262,00 €



stic
2700K

| | |
|----------|--|
| 91760-AN | |
| 91760-CB | |
| 91760-WH | |
| 91760-BL | |

266,00 €



up R
2700K

| | |
|------------|--|
| 91820-R-AN | |
| 91820-R-SG | |
| 91820-R-WH | |
| 91820-R-BL | |

184,00 €



up S
2700K

| | |
|------------|--|
| 91820-S-AN | |
| 91820-S-SG | |
| 91820-S-WH | |
| 91820-S-BL | |

184,00 €



slat
2700K

| | |
|-------------|--|
| 91130-27-AN | |
| 91130-27-CB | |
| 91130-27-SG | |
| 91130-27-WH | |
| 91130-27-BL | |

412,00 €

3000K*

| | |
|----------|---|
| 91130-AN | % |
| 91130-CB | % |
| 91130-SG | % |
| 91130-WH | % |
| 91130-BL | % |

372,00 €



como poller

| | |
|----------|----------|
| 2700K | |
| 92080-AN | |
| 92080-CB | |
| 92080-BL | |
| | 298,00 € |



cut poller

| | |
|----------|----------|
| 2700K | |
| 91045-AN | |
| 91045-CB | |
| 91045-BL | |
| | 298,00 € |



in A

| | |
|-------------|----------|
| 2700K | |
| 91081-27 | 318,00 € |
| 91081-27-BL | 328,00 € |
| 3000K* | |
| 91081 | 286,00 € |
| 91081-BL | 296,00 € |



mir R 30 poller

| | |
|-------------|----------|
| 2700K | |
| 91005-27-AN | |
| 91005-27-CB | 414,00 € |
| 3000K* | |
| 91005-AN | % |
| 91005-CB | % |
| | 374,00 € |



mir X 30 poller

| | |
|-------------|----------|
| 2700K | |
| 91001-27-AN | |
| 91001-27-CB | 414,00 € |
| 3000K* | |
| 91001-AN | % |
| | 374,00 € |



pip poller

| | |
|-------------|----------|
| 2700K | |
| 91020-27-AN | |
| 91020-27-CB | |
| 91020-27-SG | |
| 91020-27-BL | 488,00 € |
| 3000K* | |
| 91020-AN | % |
| 91020-CB | % |
| | 438,00 € |



in S

| | |
|-------------|----------|
| 2700K | |
| 91080-27 | 318,00 € |
| 91080-27-BL | 328,00 € |
| 3000K* | |
| 91080 | 286,00 € |
| 91080-BL | 296,00 € |



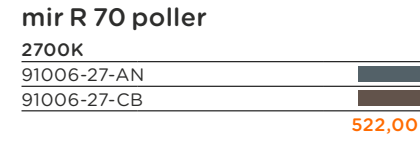
lin 40 poller

| | |
|-------------|----------|
| 2700K | |
| 92095-27-AN | |
| 92095-27-CB | |
| 92095-27-BL | 282,00 € |
| 3000K* | |
| 92095-AN | % |
| 92095-CB | % |
| 92095-BL | % |
| | 254,00 € |



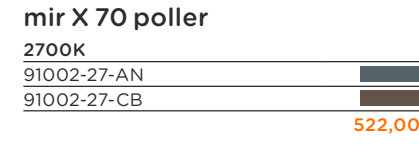
lin 40 base

| | |
|-------------|----------|
| 2700K | |
| 92093-27-AN | |
| 92093-27-CB | |
| 92093-27-BL | 268,00 € |
| 3000K* | |
| 92093-AN | % |
| 92093-CB | % |
| 92093-BL | % |
| | 238,00 € |



mir R 70 poller

| | |
|-------------|----------|
| 2700K | |
| 91006-27-AN | |
| 91006-27-CB | 522,00 € |
| 3000K* | |
| 91006-AN | % |
| 91006-CB | % |
| | 472,00 € |



mir X 70 poller

| | |
|-------------|----------|
| 2700K | |
| 91002-27-AN | |
| 91002-27-CB | 522,00 € |
| 3000K* | |
| 91002-CB | % |
| | 472,00 € |



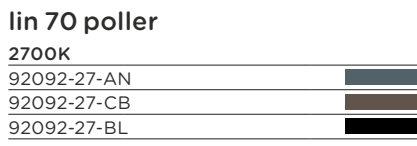
slat 40 poller

| | |
|-------------|----------|
| 2700K | |
| 91031-27-AN | |
| 91031-27-CB | |
| 91031-27-SG | |
| 91031-27-BL | 492,00 € |



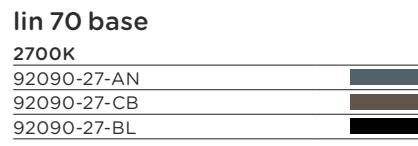
stic

| | |
|----------|----------|
| 2700K | |
| 91760-AN | |
| 91760-CB | |
| 91760-BL | 266,00 € |



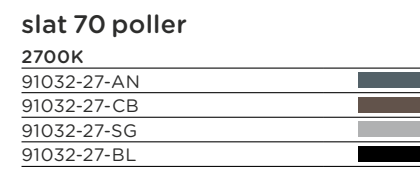
lin 70 poller

| | |
|-------------|----------|
| 2700K | |
| 92092-27-AN | |
| 92092-27-CB | |
| 92092-27-BL | 334,00 € |
| 3000K* | |
| 92092-CB | % |
| 92092-BL | % |
| | 302,00 € |



lin 70 base

| | |
|-------------|----------|
| 2700K | |
| 92090-27-AN | |
| 92090-27-CB | |
| 92090-27-BL | 318,00 € |
| 3000K* | |
| 92090-CB | % |
| 92090-BL | % |
| | 288,00 € |



slat 70 poller

| | |
|-------------|----------|
| 2700K | |
| 91032-27-AN | |
| 91032-27-CB | |
| 91032-27-SG | |
| 91032-27-BL | 558,00 € |

| | |
|----------|----------|
| 3000K* | |
| 91032-AN | % |
| 91032-SG | % |
| | 498,00 € |

CH-Stecker
Swiss plug
Aufpreis additional charge
34,00 €



lin 40 spike

| | |
|-----------------|---|
| 2700K | |
| 92094-27-AN | ■ |
| 92094-27-CB | ■ |
| 92094-27-BL | ■ |
| 268,00 € | |

| | |
|-----------------|-----|
| 3000K* | |
| 92094-AN | % ■ |
| 92094-CB | % ■ |
| 92094-BL | % ■ |
| 238,00 € | |

lin 70 spike

| | |
|-----------------|---|
| 2700K | |
| 92091-27-AN | ■ |
| 92091-27-CB | ■ |
| 92091-27-BL | ■ |
| 318,00 € | |

| | |
|-----------------|-----|
| 3000K* | |
| 92091-CB | % ■ |
| 92091-BL | % ■ |
| 288,00 € | |

CH-Stecker
Swiss plug
Aufpreis additional charge

34,00 €



pad

| | |
|-----------------|---|
| 2700K | |
| 91065-27-AN | ■ |
| 91065-27-CB | ■ |
| 91065-27-BL | ■ |
| 318,00 € | |

CH-Stecker
Swiss plug
Aufpreis additional charge

34,00 €



piek lettura

| | |
|-----------------|---|
| 2700K | |
| 92075-27-AN | ■ |
| 92075-27-CB | ■ |
| 92075-27-BL | ■ |
| 372,00 € | |

| | |
|-----------------|-----|
| 3000K* | |
| 92075-CB | % ■ |
| 336,00 € | |

piek lettura controller

| | |
|------------------|---|
| 2700K | |
| 92075-27-AN-CONT | ■ |
| 92075-27-CB-CONT | ■ |
| 92075-27-BL-CONT | ■ |
| 564,00 € | |

| | |
|-----------------|-----|
| 3000K* | |
| 92075-CB-CONT | % ■ |
| 508,00 € | |

CH-Stecker
Swiss plug
Aufpreis additional charge

34,00 €



piek mini solar

| | |
|-----------------|---|
| 2700K | |
| 93076-AN | ■ |
| 93076-CB | ■ |
| 93076-BL | ■ |
| 188,00 € | |



piek 25

| | |
|-----------------|---|
| 2700K | |
| 92071-27-AN | ■ |
| 92071-27-CB | ■ |
| 92071-27-BL | ■ |
| 184,00 € | |

piek 50

| | |
|-----------------|---|
| 2700K | |
| 92070-27-AN | ■ |
| 92070-27-CB | ■ |
| 92070-27-BL | ■ |
| 204,00 € | |

| | |
|-----------------|-----|
| 3000K* | |
| 92070-CB | % ■ |
| 184,00 € | |

piek 100

| | |
|-----------------|---|
| 2700K | |
| 92072-27-AN | ■ |
| 92072-27-CB | ■ |
| 92072-27-BL | ■ |
| 224,00 € | |

| | |
|-----------------|-----|
| 3000K* | |
| 92072-CB | % ■ |
| 202,00 € | |

CH-Stecker
Swiss plug
Aufpreis additional charge

34,00 €

Zubehör piek
accessory piek



piek cover S

| | |
|----------------|---|
| 2700K | |
| 92074-CS-AN | ■ |
| 92074-CS-CB | ■ |
| 92074-CS-BL | ■ |
| 28,00 € | |



piek cover L

| | |
|----------------|---|
| 2700K | |
| 92074-CL-AN | ■ |
| 92074-CL-CB | ■ |
| 92074-CL-BL | ■ |
| 54,00 € | |



piek cover C

| | |
|----------------|---|
| 2700K | |
| 92074-CC-AN | ■ |
| 92074-CC-CB | ■ |
| 92074-CC-BL | ■ |
| 44,00 € | |



shot 4W

2700K

| | |
|----------------|--|
| 91090-27-4W-AN | |
| 91090-27-4W-CB | |
| 91090-27-4W-BL | |

338,00 €

3000K*

| | | |
|-------------|---|--|
| 91090-4W-AN | % | |
| 91090-4W-CB | % | |
| 91090-4W-BL | % | |

298,00 €

shot 15W

2700K

| | |
|-----------------|--|
| 91090-27-15W-AN | |
| 91090-27-15W-CB | |
| 91090-27-15W-BL | |

348,00 €

3000K*

| | | |
|--------------|---|--|
| 91090-15W-AN | % | |
| 91090-15W-CB | % | |
| 91090-15W-BL | % | |

308,00 €

CH-Stecker
Swiss plug

Aufpreis additional charge

34,00 €

Zubehör shot
accessory shot



shot hook

| | |
|----------|--|
| 91092-AN | |
| 91092-CB | |
| 91092-BL | |

82,00 €



shot ring

| | |
|------------|--|
| 91090-R-AN | |
| 91090-R-CB | |
| 91090-R-BL | |

20,00 €



shot tee

| | |
|----------|--|
| 91091-AN | |
| 91091-CB | |
| 91091-BL | |

72,00 €



jack . Steckdosen säule
jack . connecting pillar

EUR-norm

| | |
|----------|--|
| 55090-AN | |
| 55090-CB | |
| 55090-BL | |

384,00 €

BE+FR-norm

| | |
|---------------|--|
| 55090-BEFR-AN | |
| 55090-BEFR-CB | |
| 55090-BEFR-BL | |

448,00 €

CH-norm

| | |
|-------------|--|
| 55090-CH-AN | |
| 55090-CH-CB | |
| 55090-CH-BL | |

488,00 €



slat spike

2700K

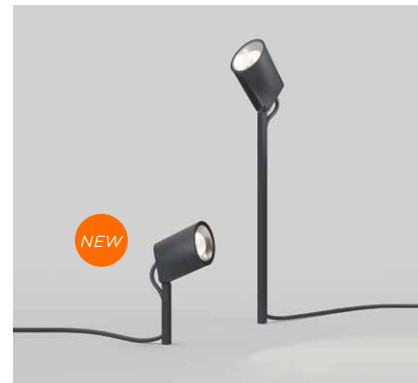
| | |
|-------------|--|
| 91030-27-AN | |
| 91030-27-CB | |
| 91030-27-BL | |

348,00 €

CH-Stecker
Swiss plug

Aufpreis additional charge

34,00 €



stic 30 spike

2700K

| | |
|-------------|--|
| 91061-27-AN | |
| 91061-27-CB | |
| 91061-27-BL | |

278,00 €

stic 70 spike

2700K

| | |
|-------------|--|
| 91060-27-AN | |
| 91060-27-CB | |
| 91060-27-BL | |

308,00 €

3000K*

| | | |
|----------|---|--|
| 91060-AN | % | |
| 91060-CB | % | |

278,00 €

CH-Stecker
Swiss plug

Aufpreis additional charge

34,00 €



in A connect

2700K

| | |
|----------------|----------|
| 91081-27-CO | |
| | 342,00 € |
| 91081-27-BL-CO | |
| | 352,00 € |

3000K*

| | |
|-------------|----------|
| 91081-CO | % |
| | 310,00 € |
| 91081-BL-CO | % |
| | 320,00 € |



in S connect

2700K

| | |
|----------------|----------|
| 91080-27-CO | |
| | 342,00 € |
| 91080-27-BL-CO | |
| | 352,00 € |

3000K*

| | |
|-------------|----------|
| 91080-CO | % |
| | 310,00 € |
| 91080-BL-CO | % |
| | 320,00 € |



pad connect

2700K

| | |
|----------------|----------|
| 91065-27-AN-CO | |
| 91065-27-CB-CO | |
| 91065-27-BL-CO | |
| | 342,00 € |



shot 4W connect

2700K

| | |
|-------------------|----------|
| 91090-27-4W-AN-CO | |
| 91090-27-4W-CB-CO | |
| 91090-27-4W-BL-CO | |
| | 362,00 € |

3000K*

| | |
|----------------|----------|
| 91090-4W-AN-CO | % |
| 91090-4W-CB-CO | % |
| 91090-4W-BL-CO | % |
| | 322,00 € |

Zubehör shot accessory shot



shot ring

| | |
|------------|---------|
| 91090-R-AN | |
| 91090-R-CB | |
| 91090-R-BL | |
| | 20,00 € |



shot tee

| | |
|----------|---------|
| 91091-AN | |
| 91091-CB | |
| 91091-BL | |
| | 72,00 € |



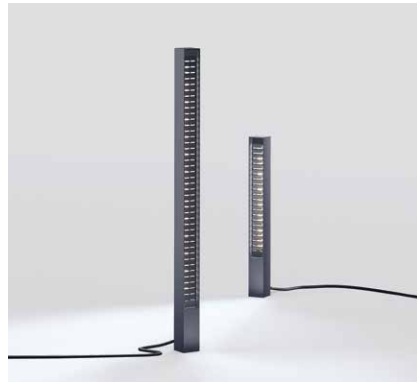
lin 40 base connect

2700K

| | |
|----------------|----------|
| 92093-27-AN-CO | |
| 92093-27-CB-CO | |
| 92093-27-BL-CO | |
| | 292,00 € |

3000K*

| | |
|-------------|----------|
| 92093-AN-CO | % |
| 92093-CB-CO | % |
| 92093-BL-CO | % |
| | 262,00 € |



lin 40 spike connect

2700K

| | |
|----------------|----------|
| 92094-27-AN-CO | |
| 92094-27-CB-CO | |
| 92094-27-BL-CO | |
| | 292,00 € |

3000K*

| | |
|-------------|----------|
| 92094-AN-CO | % |
| 92094-CB-CO | % |
| 92094-BL-CO | % |
| | 262,00 € |



piek 25 connect

2700K

| | |
|----------------|----------|
| 92071-27-AN-CO | |
| 92071-27-CB-CO | |
| 92071-27-BL-CO | |
| | 208,00 € |

shot 15W connect

2700K

| | |
|--------------------|----------|
| 91090-27-15W-AN-CO | |
| 91090-27-15W-CB-CO | |
| 91090-27-15W-BL-CO | |
| | 372,00 € |

3000K*

| | |
|-----------------|----------|
| 91090-15W-AN-CO | % |
| 91090-15W-CB-CO | % |
| 91090-15W-BL-CO | % |
| | 332,00 € |



piek lettura connect

2700K

| | |
|----------------|----------|
| 92075-27-AN-CO | |
| 92075-27-CB-CO | |
| 92075-27-BL-CO | |
| | 396,00 € |

3000K*

| | |
|-------------|----------|
| 92075-CB-CO | % |
| | 360,00 € |



slat spike connect

2700K

| | |
|----------------|----------|
| 91030-27-AN-CO | |
| 91030-27-CB-CO | |
| 91030-27-BL-CO | |
| | 372,00 € |



stic 30 spike connect

2700K

| | |
|----------------|----------|
| 91061-27-AN-CO | |
| 91061-27-CB-CO | |
| 91061-27-BL-CO | |
| | 302,00 € |

lin 70 base connect

2700K

| | |
|----------------|----------|
| 92090-27-AN-CO | |
| 92090-27-CB-CO | |
| 92090-27-BL-CO | |
| | 342,00 € |

3000K*

| | |
|-------------|----------|
| 92090-CB-CO | % |
| 92090-BL-CO | % |
| | 312,00 € |

lin 70 spike connect

2700K

| | |
|----------------|----------|
| 92091-27-AN-CO | |
| 92091-27-CB-CO | |
| 92091-27-BL-CO | |
| | 342,00 € |

3000K*

| | |
|-------------|----------|
| 92091-CB-CO | % |
| 92091-BL-CO | % |
| | 312,00 € |

piek 50 connect

2700K

| | |
|----------------|----------|
| 92070-27-AN-CO | |
| 92070-27-CB-CO | |
| 92070-27-BL-CO | |
| | 228,00 € |

3000K*

| | |
|-------------|----------|
| 92070-CB-CO | % |
| | 208,00 € |

piek 100 connect

2700K

| | |
|----------------|----------|
| 92072-27-AN-CO | |
| 92072-27-CB-CO | |
| 92072-27-BL-CO | |
| | 248,00 € |

3000K*

| | |
|-------------|----------|
| 92072-CB-CO | % |
| | 226,00 € |

stic 70 spike connect

2700K

| | |
|----------------|----------|
| 91060-27-AN-CO | |
| 91060-27-CB-CO | |
| 91060-27-BL-CO | |
| | 332,00 € |

3000K*

| | |
|-------------|----------|
| 91060-AN-CO | % |
| 91060-CB-CO | % |
| | 302,00 € |

IP44.de connect Zubehör accessory



5 m Netz-Anschlussverbindung
5 m mains connection port
55100

56,00 €

5 m Netz-Anschlussverbindung mit CH-Stecker

5 m mains connection port with Swiss plug
55100-CH

68,00 €



Erd-Anschluss-Kit
underground connection kit
55202

98,00 €



jack . Steckdosensäule
jack . connecting pillar

| EUR-norm | |
|----------|----------|
| 55090-AN | |
| 55090-CB | |
| 55090-BL | |
| | 384,00 € |

| BE+FR-norm | |
|---------------|----------|
| 55090-BEFR-AN | |
| 55090-BEFR-CB | |
| 55090-BEFR-BL | |
| | 448,00 € |

| CH-norm | |
|-------------|----------|
| 55090-CH-AN | |
| 55090-CH-CB | |
| 55090-CH-BL | |
| | 488,00 € |



Erd-Anschlussverbindung
earth connection port
55112

34,00 €



Verlängerungskabel
extension cable
2 m
55102

32,00 €

5 m
55105

42,00 €

10 m
55110

62,00 €



Y-Verteilerbox
Y-junction box
55122

28,00 €



H-Verteilerbox
H-junction box
55123

54,00 €



Verschlusskappe Buchse
sealing cap socket
55192

4,00 €



Controller
controller
55400

298,00 €

ground Zubehör accessory



Erdstück
anchorage unit
55099

82,00 €



Y-Verbinder
Y-connector
55312

28,00 €



Erd-Abzweigkasten inkl. Anschlussklemme + Gießharz
earth distribution box incl. connection terminal + cast resin
55380

64,00 €

Unverbindliche Preisempfehlung
recommended retail prices

Die Informationen in dieser Preisliste entsprechen dem Stand zum Zeitpunkt der Drucklegung. IP44.de behält sich spätere Änderungen auch ohne Ankündigung vor. Alle Farbwiedergaben können nur eine Orientierung vermitteln und sind keine Referenzmuster.

The information in this price list correspond to the status at the time of printing. IP44.de reserves the right to make subsequent changes without notice. All colour reproductions can only provide an orientation and are not reference samples.

Für unsere Auslaufmodelle bieten wir unseren üblichen Instandhaltungs- und Revisionservice an.

For our discontinued models we offer our usual maintenance- and revision service.

©IP44 Schmalhorst GmbH & Co. KG

IP44 Schmalhorst GmbH & Co. KG

Mühlenstraße 20 . 33378 Rheda-Wiedenbrück . Germany
T +49 5242 5797-0 . welcome@IP44.de . www.IP44.de

